

Database Extractor Pro

Contents

<u>Description</u>	<u>Page</u>
User Form	2
Log Files	4
User Guide	5
Enhanced User Guide	6
SQL Guide	
Syntax	7
Examples	8
Special Features	9 – 12
Feature Matrix	13

Database Extractor Pro User Interface

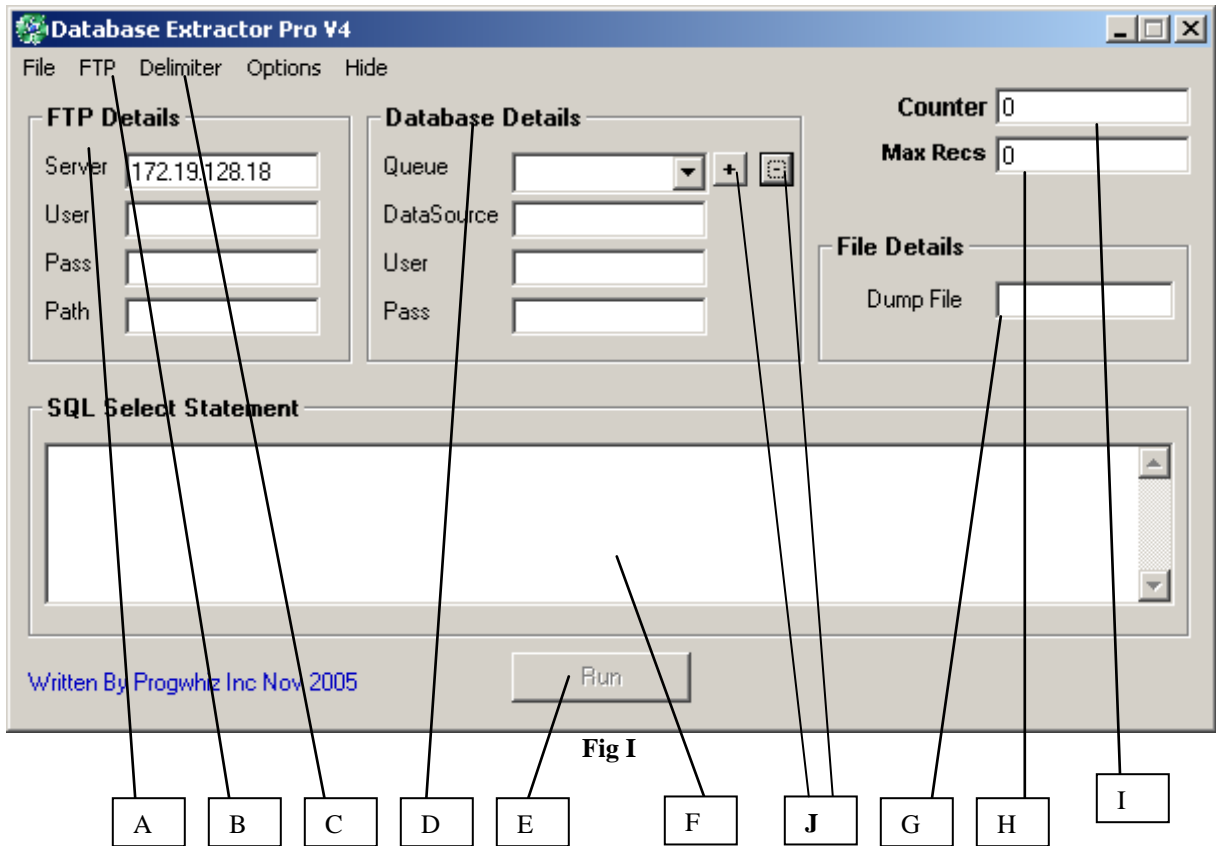
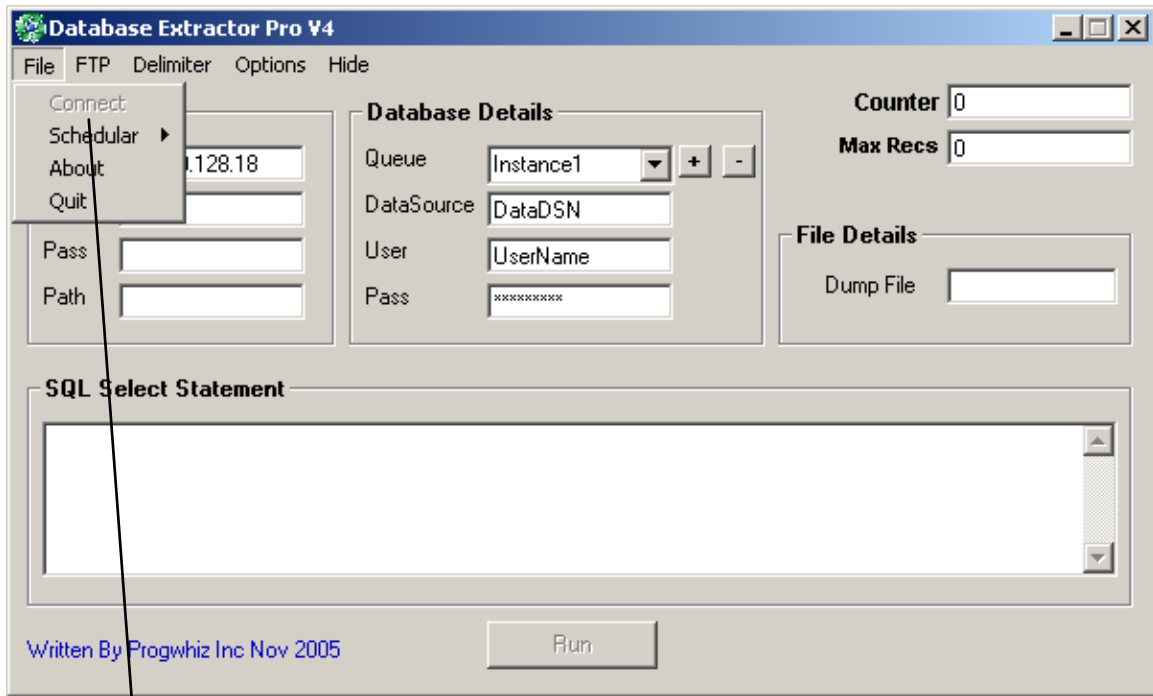


Fig I

- A – FTP Details
- B – Activate / Deactivate FTP
- C – Set the type of flat file produced (Fixed length, Comma or Tab delimited)
- D – Database ODBC Setting
- E – Immediate Run of the Application
- F – Select Statement
- G – Name of the flat file to be produced
- H – Maximum No of records to return (Zero if no limit)
- I – Counter to show number of records returned
- J – Create several extract processes using same or different SQL on same or different database instances



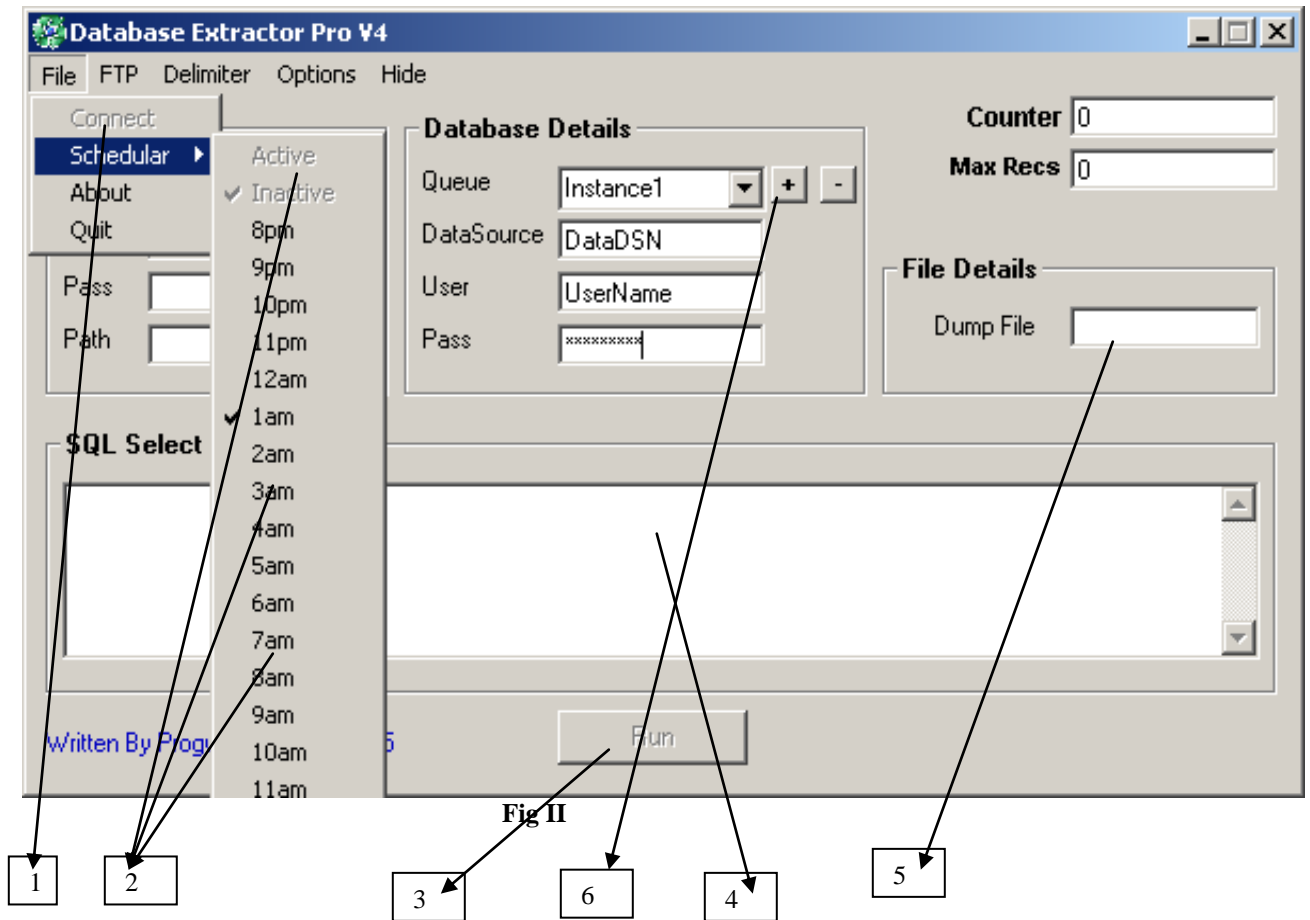
J

J – Connect to the Database pointed by the ODBC DataSource Name entered

Auditing Features & Log Files

<u>File Name</u>	<u>Description</u>
FILEUPL.LOG	Records the Date, Time, Name of file sent and the size in bytes as well as if the transfer was a FAIL or PASS.
VALUES.LOG	Records the last settings used for the Ftp Login and the Database Login. The password is encrypted in this file for security measures
ERR_UPLOAD.LOG	Records the Date & Time the FTP could not connect to the FTP server or Network to initiate an Upload.
REPORT_LOG.TXT	Records the Start/Stop Date & Time a task ran

User Guide



Step 1 (Mandatory)

Enter Settings for Database file as shown in (6). This done by clicking + then entering the DSN/User/Pass info.

Step2 (Optional)

Enter FTP settings

Step3

Enter the SQL statement desired as shown in (4). The syntax of the SQL statement is same logic as standard SQL with a simple amendment as explained in page 6

Step4

Set the name of the dump file as shown in (5)

Step5

Select Connect as shown in (1) to verify Connectivity and SQL syntax

Step6

Run the query and populate the dump file. This can be initiated by one of two(2) methods

- Manually – Shown in (3)
- Automatically Scheduled – Shown in (2)

Enhanced User Guide

The screenshot shows the Database Extractor Pro 2.5 application window. The title bar reads "Database Extractor Pro 2.5". The menu bar includes "File", "FTP", "Delimiter & EOLN Marker", "Options", and "Hide".

The interface is divided into several sections:

- FTP Details:** Server (ftp.com), User (user), Pass (masked with asterisks), Path (/path).
- Database Details:** Queue (Instance1), DataSource (dnstest), User (admin), Pass (empty).
- Counter:** Counter (0), Max Recs (0), Min Recs (11).
- File Details:** Dump File (dump2.dat).
- Extract SQL Statement:** A text area containing "Select FieldOne(10), FieldTwo(20) from TestTable".
- Condition SQL Statement:** A text area containing "Select FieldOne, FieldTwo from TestTable2".

At the bottom left, it says "Written By Progwhiz Inc Jan 2006". At the bottom center, there is a "Run" button.

The Database Extractor Pro extracts data once the following conditions are satisfied.

- ❑ **Condition SQL statement** that must return a Record Count greater than 0 or the Statement is left blank
- ❑ **Min Recs** must be greater than or equal to the value entered or Value entered is Zero(0)

SQL Guide

The following will show an example of standard SQL and the syntax of the SQL the application will interpret correctly. The rationale for the syntax variation is to facilitate proper file layout of the data to facilitate easy importation into any Database / Spreadsheet / Word Processor.

Syntax

Standard SQL

Select FirstName, LastName from Employee

Application SQL

Select FirstName(20), LastName(20) from employee

* Where FirstName, LastName are pseudo examples of field names in the table 'employee' chosen

As seen in the above example the value in parenthesis indicates the length of the field. Not only does this ensure the value in the field is less than or equal to the length value depicted, it also fills with spaces to ensure the field width is fixed.

N.B “**Select ***” is NOT Valid syntax. Field names must be entered explicitly

Examples

Application SQL

Correct

Select FirstName(20), LastName(20) from employee

InCorrect

Select Trim(FirstName(20)), LastName(20) from employee

Correct

Select FirstName(20), LastName(20) from employee where FirstName = 'Paul'

Correct

Select FirstName(20), LastName(20) from employee where Trim(FirstName) = "Paul"

Correct(MS SQL)

Select FirstName(20), LastName(20) from employee where mid(Trim(FirstName),1,1) = "P"

Correct(Oracle SQL)

Select FirstName(20), LastName(20) from employee where substr(Trim(FirstName),1,1) = "P"

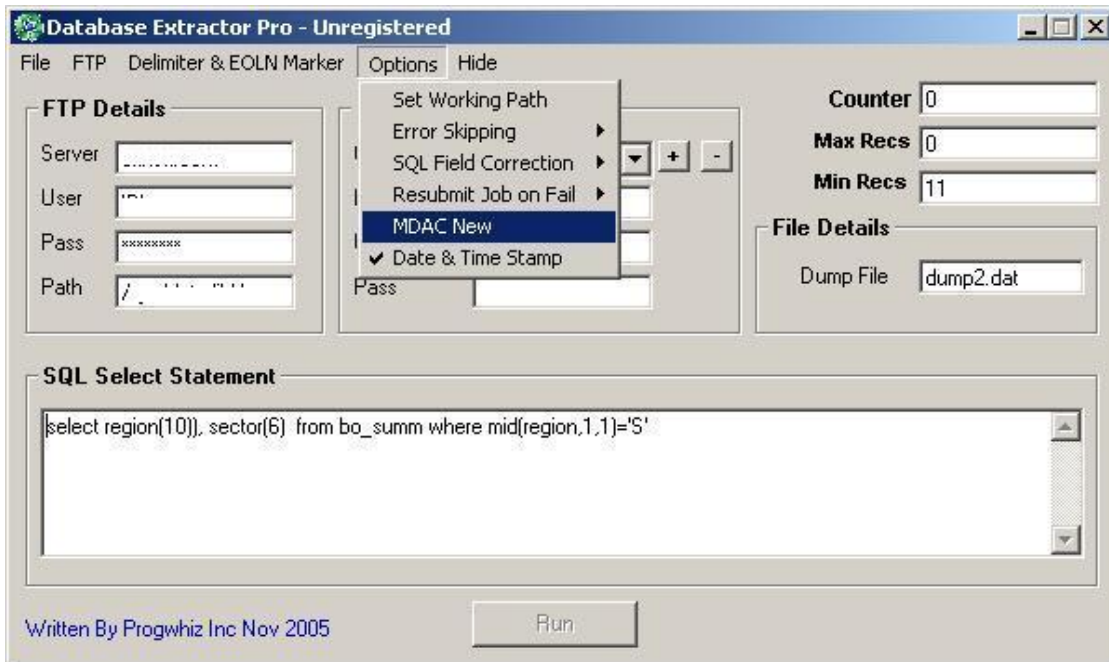
Special Features

- ❑ **Manual Run**
- ❑ **Automated Scheduled Run (Daily)**
- ❑ **Simple SQL semantics**
- ❑ **FTP uploading capability to port the exported file to any platform or location**
- ❑ **Varied file layouts supported to ensure easy importation into another platform**
- ❑ **Logging of all events**
- ❑ **Ability to set to retrieve only sample recordsets**
- ❑ **Encryption for all passwords (Database & FTP logins)**
- ❑ **Friendly prompts to guide user if an error in setting up occurred**

Features (Pro)

- ❑ **Strict user control Enable/Disable of user buttons where applicable**
- ❑ **Multiple database instances saved to facilitate extracts from various database/tables using multiple SQL Select scripts**
- ❑ **Ability to Date/Time stamp 'dump' files**
- ❑ **Auto Error correction capability in the event field data is corrupt or actual field names are incorrect**
- ❑ **Additional end of line characters Menu options**

- New support for MDAC if Database is not connecting as shown below in Fig A



Special Note:

Installing on Win2k/2k3 Server OS or WinXP64 may require installing [MDAC 2.5x](#)

Latest Features (30th Sept 2011)

The screenshot shows the Data Integrator Pro 4.4 - Unregistered application window. The interface is divided into several sections for configuring data integration tasks.

FTP Details: Server: 172.19.128.18, User: [empty], Pass: [empty], Path: [empty]

Database Details (Read): Queue: Instance1, DataSource: try2, User: admin, Pass: [empty], Activity Type: File, Frequency: Daily, Source Type: ODBC Only, File Name: [empty], # of Fields: 1, Time 24h Hr: 0, Min: 0, On: [checkbox]

Database Details (Write): DataSource: [empty], User: [empty], Pass: [empty]

Counter: Counter: 0, Max Recs: 0, Min Recs: 0

File Details: Dump File: testit.dat

SQL Statements:

- Extract SQL Statement [Select] (Read Database):** select name(10) from country_table
- Condition SQL Statement [Select] (Read Database):** [empty]
- Write SQL Statement [Insert / Update] (Write Database):** [empty]
- Condition SQL Statement [Select] (Write DataBase):** [empty]

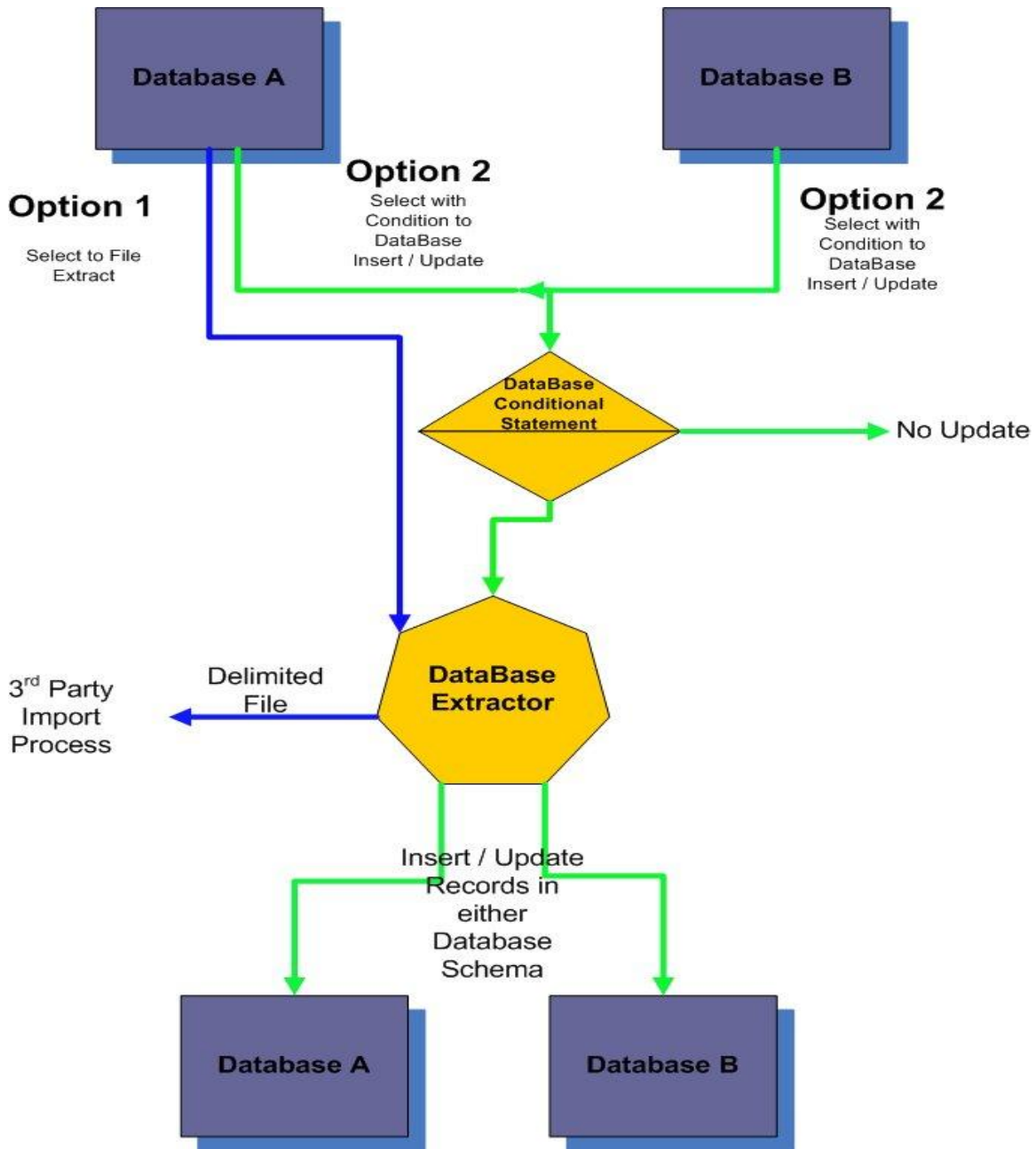
Run button

Written By: Proqubis Inc 2007

Features:

- Ability to set Minimum records to be reached or file will not be produced
- Ability to set a select statement with a condition that must produce at least one record for the Extract SQL to produce results (Optional)
- Ability to set a schedule time for each DataBase schema entered
- Ability to either:
 - Produce an extract File
 - Transfer the contents of the extract to another Database

N.B. The Insert & Update syntax must conform for the standards of SQL syntax. The only exception is the ability to enter Variables that are in relative harmony with the Extract SQL statement in the first Text Box



Features Matrix

Feature	Result	Description
Database Extract	Export File	Delimited File. Choices of various delimiters (Comma, Pipe, Tab)
Database Extract w/Condition SQL	Export File	Delimited File. Choices of various delimiters (Comma, Pipe, Tab)
FTP Upload	Transfer Export File	Upload Export File via FTP Protocol
Read Database/Write Database	Update Write Database	Extract Data from Read Database and update Write Database
Read Database/Write Database w/Condition SQL	Update Write Database	Extract Data from Read Database and update Write Database
Read Import File/Write Database	Update Write Database	Extract Data from Import File and update Write Database
Scheduler	Set Date/Time/Frequency	Ability to set the frequency for execution per Data source entry