

Sonoff

Seamless

Device ID to IP

Mapping

Solution

www.progwhiz.com

Contents

Contents.....	2
Introduction	3
Benefits	4
Overview	5
Online Switch Portal.....	5
Site Application	5
Software REST API.....	5
Misc Tools	5
Misc Tools Video Walkthroughs	5
Workflow.....	6
Schema Workflow.....	7
Support	8

Introduction

The following document illustrates the Sonoff Switch solution to provide seamless interaction between Sonoff Switches and custom software using an API.

www.progwhiz.com

Benefits

Feature	Pain Point	Value Add
Legacy Lock to Electronic	Have to be on site to Lock/Unlock	Remotely controlled from anywhere wifi is available
Desktop & Mobile Apps to control the eLocks	NA	All popular operating systems supported
Cost friendly	NA	Suit any budget or size organization
Transform any manual lock or electric lock to a computerized controlled system	NA	Compatible with powered locks and can upgrade manual locks to electronically computerised locks
Software Plugin to integrate with any existing platform	NA	Upgrade any software system to control the elocks seamlessly
Easy implementation	NA	Within 1 day *

*- Dependent on the physical infrastructure to facilitate installing electronic switches, which is a small foot print

Overview

The Sonoff Solution comprises of the following components:

Online Switch Portal

- Create Switch Profiles (Device ID, IP, Port , Station ID, etc) - [Portal](#)
- Update Switch Profiles (Device ID, IP, Port , Station ID, etc) - [Portal](#)

Site Application

- Update Database to current Device ID to IP Mapping



Software REST API

- Ability to query the current IP for a specific Device ID

Misc Tools

- Sonoff Controller to configure Device



- Sonoff Adhoc Device IP Finder



Misc Tools Video Walkthroughs

- Sonoff Controller to configure Device



- Sonoff Adhoc Device IP Finder



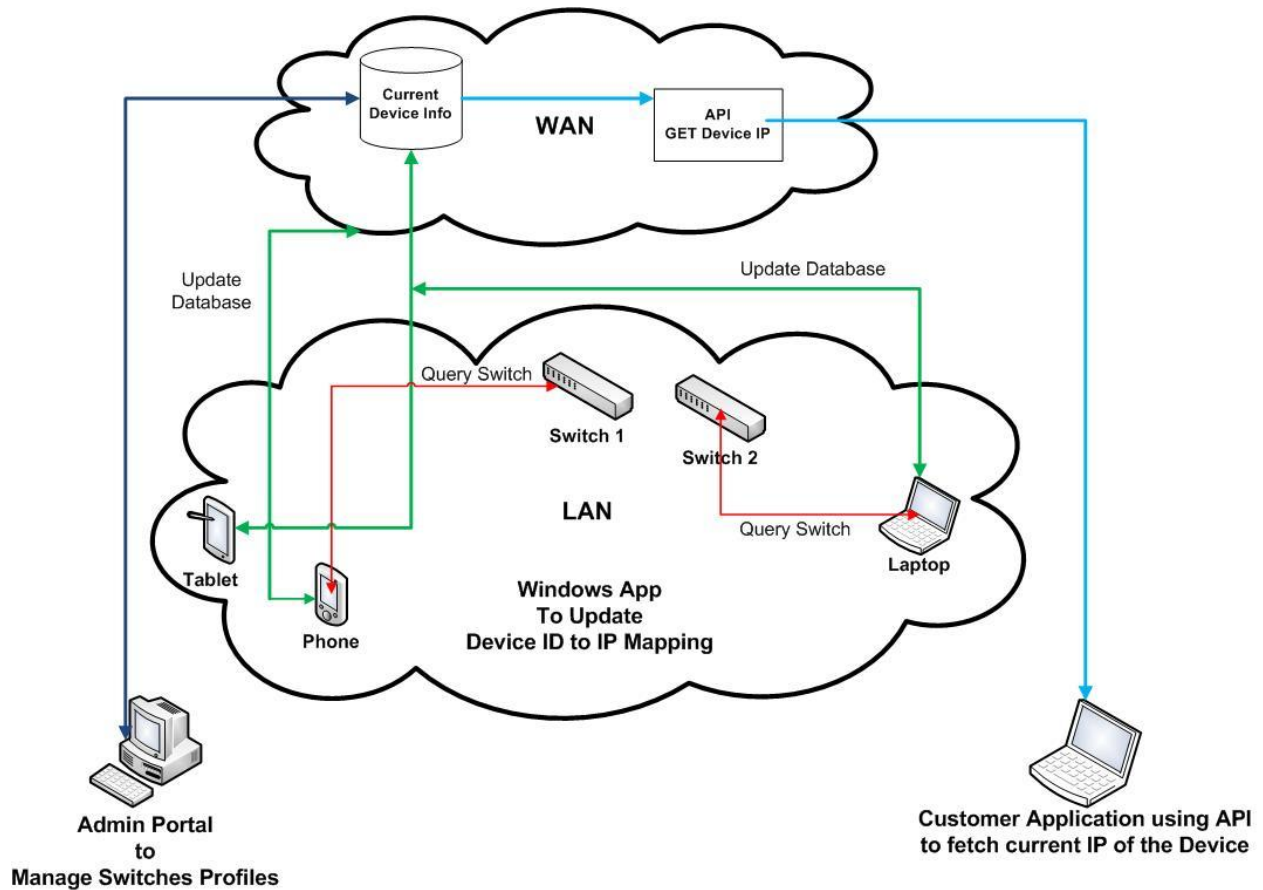
Workflow

The process to configure and utilize the system is as follows:

Step	Description	Reference
1	Add/Update Switch profiles via the web portal using the credentials supplied	https://www.progwhiz.com/Campaign/addlock.html or https://www.progwhiz.com/Campaign/modifylockclient.html
2	Run the Windows application as desired to keep the Device ID to IP current	https://www.progwhiz.com/files/LockServerUpdater_sa.rar
3	Use this system API to fetch the current IP for each Device to interact with each of the switches using 3 rd party applications that have integrated the Sonoff API	https://www.progwhiz.com/Progwhiz_Sonoff_API.pdf

Schema Workflow

The following diagram depicts the components of the solution and the process flow interaction.



Support

Support Software and Documentation is provided below:

Website

https://www.progwhiz.com/portal_locks.html

API

https://www.progwhiz.com/Progwhiz_Sonoff_API.pdf